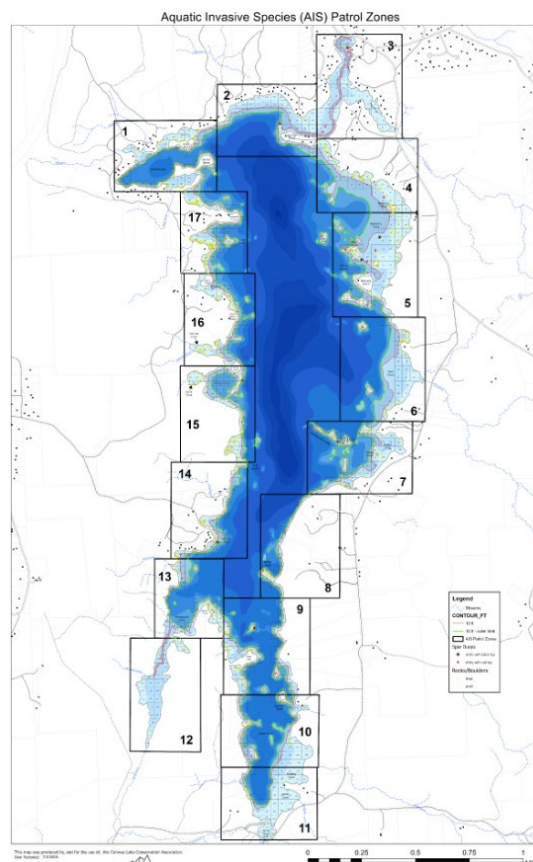


## Instructions to Download the AIS Index Map and use the Avenza App

We have a version of the AIS Patrol Grid Map with imbedded geo-location information. This allows you to download the map to your phone and use a mapping app like Avenza Maps to see your real-time location on the lake. The map displays patrol zones, grid sections, depth contours at 5-foot intervals, and marks the location of rocks and boulders. Additionally, you can record your patrol route and share it on the blog.

A green line on the map (15 ft depth contour) shows the outward extent of the littoral zone where aquatic plants can grow. Aquatic plants (including invasives) could occur anywhere between the shoreline and this depth limit. The map's red line marks the 10 ft depth contour, and Cliff observes that most invasive plant growth occurs between the shoreline and this depth in other lakes.

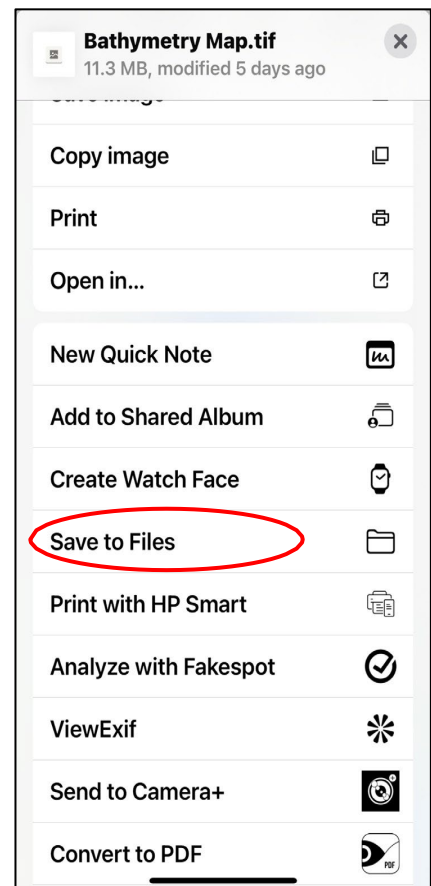
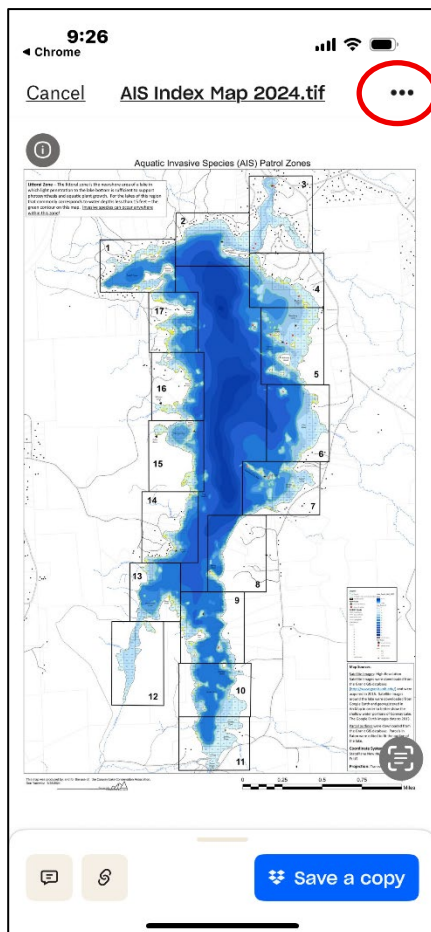


The instructions below explain how to download the map file to your phone and add it to the Avenza app.

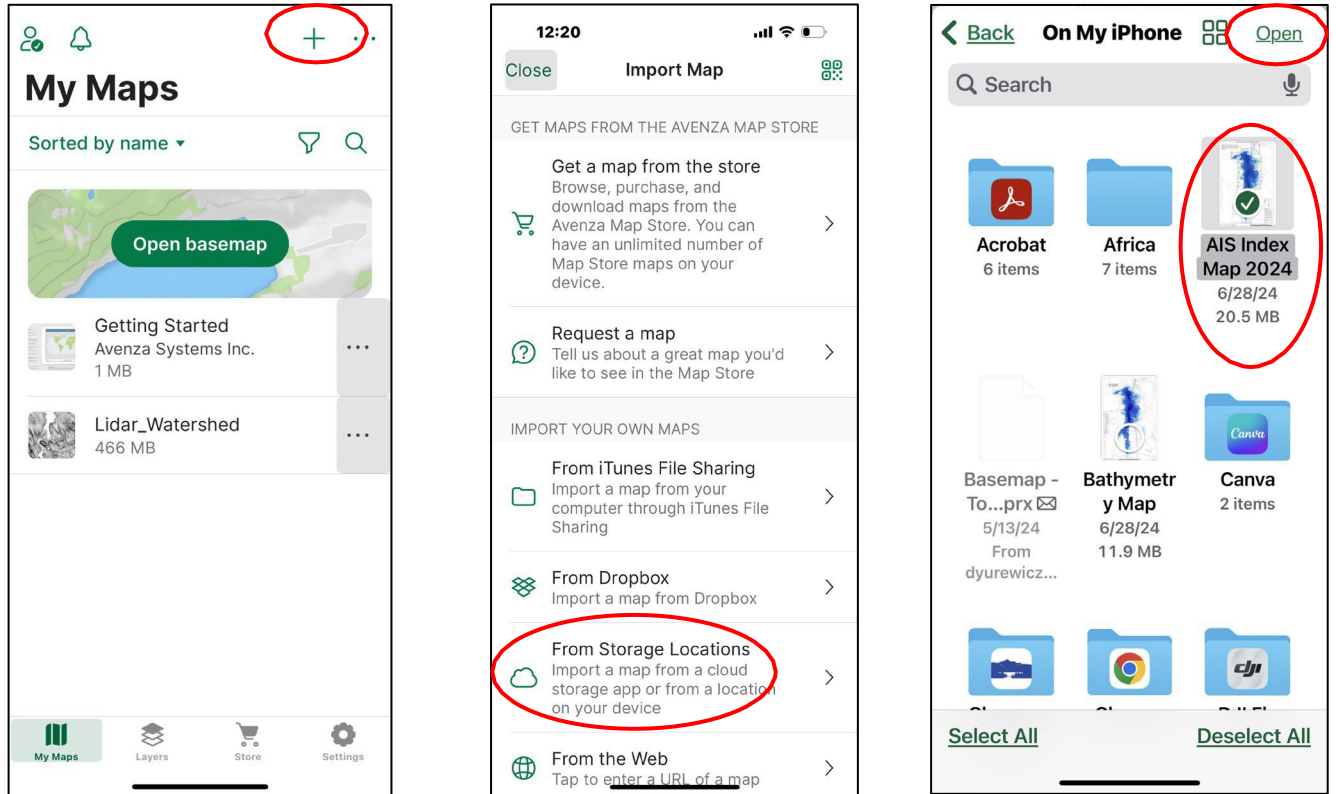
1. On your phone go the AIS maps page on the CLCA website:

<https://www.conwaylake.org/patrol-maps>. Open the link for the map labeled Inex Map – GEOTIFF File. that will take you to a Dropbox folder with a copy of the map.

2. Save this map file to your phone. On an iPhone you need to open the link on your phone, click the **three dots** in the upper right corner, and then click on **Export** and then **Save to Files**. **Do Not** use the **Save Image** to save it to your photos– it will alter the file structure of the image and make it unusable in Avenza.



3. Open the Avenza app on your phone and use the + symbol in the upper right corner to import the map to the app. On the screen that pops up select From Storage Locations and go the Files folder on your phone and select the AIS Index Map 2025 file. Tap the Open icon in the upper right corner to start the download.



4. The map should now appear in the Avenza map directory, and you can open it up. A blue dot on the map will show your location. (You can download up to 2 maps in Avenza without needing a subscription.)

5. To record your track as you patrol go down to the pencil/ruler icon in the lower left-hand corner of the map and then select Record GPS Tracks. At the end of your patrol you can then create a screen shot and add it to your blog post to show precisely where you've been.
6. When you are done you can tap on the stacked sheets icon in the lower left corner of the screen to delete or hide your track. I would suggest you hide it so you can layer your tracks over the course of the summer to see a summary of your tracks.

